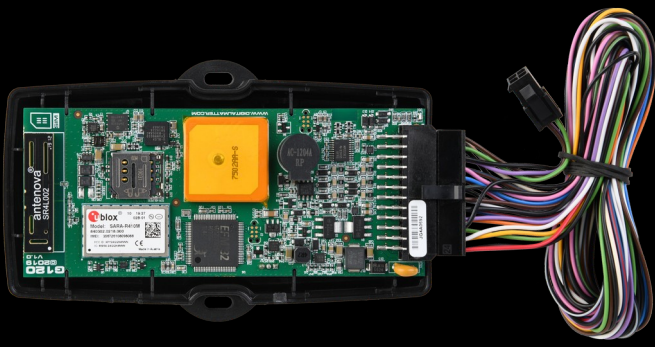




**GPS Trailer  
Trackers**





# Improve Trailer Tracking and Utilization

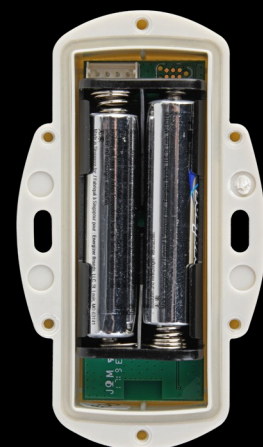
Track, manage, and recover with integration-ready, battery-powered and wired trailer trackers

GPS trailer trackers allow you to track and monitor your fleet of trailers on-site and in transit. Our weatherproof, rugged, and battery-powered and wired GPS trackers for trailers report location and movement history, detect impacts, provide utilization reports, alerts for preventative maintenance and discreetly assist in anti-theft safety and theft recovery of trailers and the valuable assets they carry.



## Track More with Bluetooth® Low Energy

Several of our GPS trailer tracker devices also feature Bluetooth® to provide both location tracking and detection of nearby Bluetooth tags and sensors. Third-party Bluetooth tags can be installed on lower-value assets that may not require a full tracking solution, such as pallets, tools, small equipment, and more. These tags can report to the nearest Bluetooth-enabled tracking device for an affordable asset management solution. Third-party temperature, humidity, shock, and vibration sensors can also be integrated with our Bluetooth gateways for sensor monitoring applications.



# TRAILER TRACKING DEVICE FEATURES



## High Precision GPS

GPS and GLONASS positioning systems are used simultaneously with a 72 channel high sensitivity receiver (-167dBm) for enhanced accuracy and faster fixes.



## Long Battery Life

Battery-life up to 10 years with built-in battery life management for monitoring use and remaining life predictions.



## Run Hour Monitoring

Capture run hours based on movement to understand and optimize equipment utilization.



## Global Connectivity

Cellular (2G, 4G LTE-M / NB-IoT), LoRaWAN®, Sigfox and Bluetooth® Tracking Solutions.



## Rugged & Weatherproof

IP67 rated housing ensures the device can withstand fine dust, high-pressure spray, submersion for 30 minutes in 1m of water, and extreme temperatures.



## Periodic or Movement-Based

Configure devices to send updates based on set time intervals (1x, 3x, 5x a day, etc..) or when movement occurs.



## Theft Recovery

Switch to Recovery Mode in the case of theft or loss to activate live-tracking at 30 second intervals for asset retrieval.



## Advanced Geofencing

Create custom geofences and alerts if equipment enters or leaves specific locations. Geofences can also be downloaded directly to the device for enhanced location-based behaviors.



## Easy Install

Multiple installation options for covertly securing devices to assets with screws, bolts, cable ties, rivets, and more.



## Flexible Configuration

Configure device parameters such as heartbeat rate, movement and accelerometer settings, and more to fit any tracking application.



## Impact Detection

Configure impact-detection alerts when g-forces are exceeded by a user-defined threshold.



## Preventative Maintenance

Set proactive maintenance reminders based on run hours and distance traveled to reduce equipment downtime and repair costs.

# TRAILER TRACKING DEVICES

## OYSTER



Ultra-rugged, long-life battery-powered GPS tracking device with up to 7 years battery life for asset tracking and management, theft recovery, and more.

## YABBY EDGE



Ultra-rugged and compact Indoor/Outdoor battery-powered asset tracker. Features cloud-based location solving for over 10 years of battery life.

## REMORA



Ultra-rugged, long-life battery-powered GPS tracking device with up to 7 years battery life for asset tracking and management, theft recovery, and more.

## G62



Rugged and robust vehicle, trailer, or heavy equipment GPS tracking device with inputs/outputs, remote immobilization for fleet management, equipment monitoring, driver ID, theft recovery, and more

## OYSTER EDGE



Ultra-rugged, Indoor/Outdoor battery-powered asset tracking device and Bluetooth® Gateway. Features cloud-based location solving for 10+ years of battery life.

## FALCON



Robust battery-powered or wired GPS tracking device with inputs/outputs, I<sup>2</sup>C Sensor Interface, and WiFi Positioning for indoor and outdoor asset tracking and sensor monitoring

# QUALITY MATTERS ...

PrismaQuality serves consumers, companies of any size and system developers with IoT – devices, web-tools and mobile applications. From our product range there can be found suitable sensors for almost any kind of customer and for almost any kind of application. As data services and alert generation, we use several types of mapping solutions and wide range of use case tailored platforms. As communication routes, up-to-date IoT – networks, traditional cellular networks and satellite communication networks are all used regularly.

## PrismaQuality OÜ

Sombre tee 2,  
Suurupi küla,  
Harku vald,  
Harjumaa 76907, ESTONIA

Phone: +372 58 872 701  
Phone: +358 45 188 2189  
Phone: +358 40 528 5182  
Email: [info@prismaquality.net](mailto:info@prismaquality.net)  
[www.prismaquality.net](http://www.prismaquality.net)

